

ASSEMBLY INSTRUCTIONS

MERCEDES SPRINTER 170'' EXTENDED CARGO

This document presents the detailed procedures for assembling Legend Fleet components and accessories.

Customers can make use these step-by-step procedures and easily assemble without major difficulty.



LEGEND
FLEET SOLUTIONS

519 688 1043
customercare@legendfleet.com

56957 HWY 3 WEST,
TILLSONBURG,
ON N4G 4G8.

Table of Contents

| | |
|-----------------------|----|
| Wheel Well Cover..... | 3 |
| Floor..... | 4 |
| Floor Sills | 8 |
| Wall Liners | 10 |
| Ceiling Liners..... | 13 |
| Top Sills..... | 17 |
| Door Liners | 21 |

Wheel Well Cover

Parts and Hardware



DRIVER SIDE'S WHEEL WELL COVER

PASSENGER SIDE'S WHEEL WELL COVER

8 x

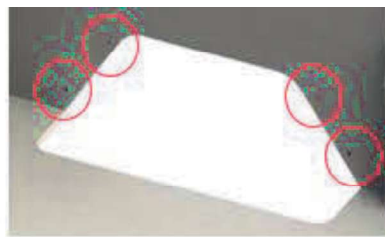
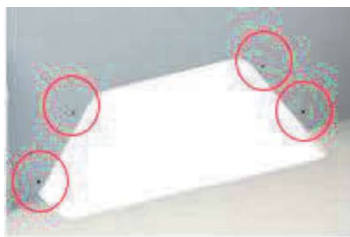


PUSH-IN RIVET

Assembly Instructions

Floor and Wall liner must be installed after the installation of Wheel well covers

Step 1: Place the **Driver side** and **Passenger side** wheel well covers in the vehicle, as shown below.



"positioning of Passenger side WWC"

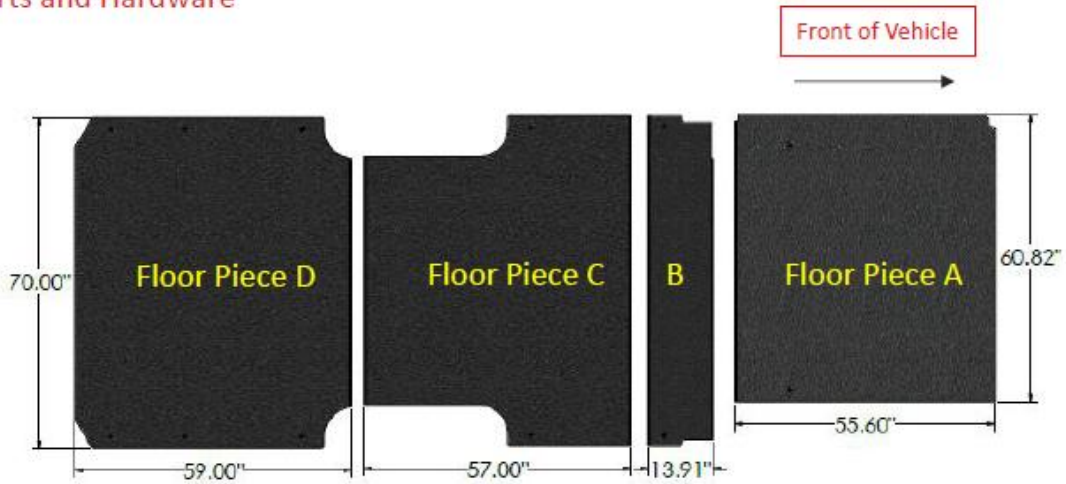
"positioning of Driver side WWC"

8 x



Floor

Parts and Hardware



FIRST RAIL JOINT (59.35")



SECOND RAIL JOINT (70.00")



THIRD RAIL JOINT (52.42")



M8 BOLT



M8 FLAT WASHER

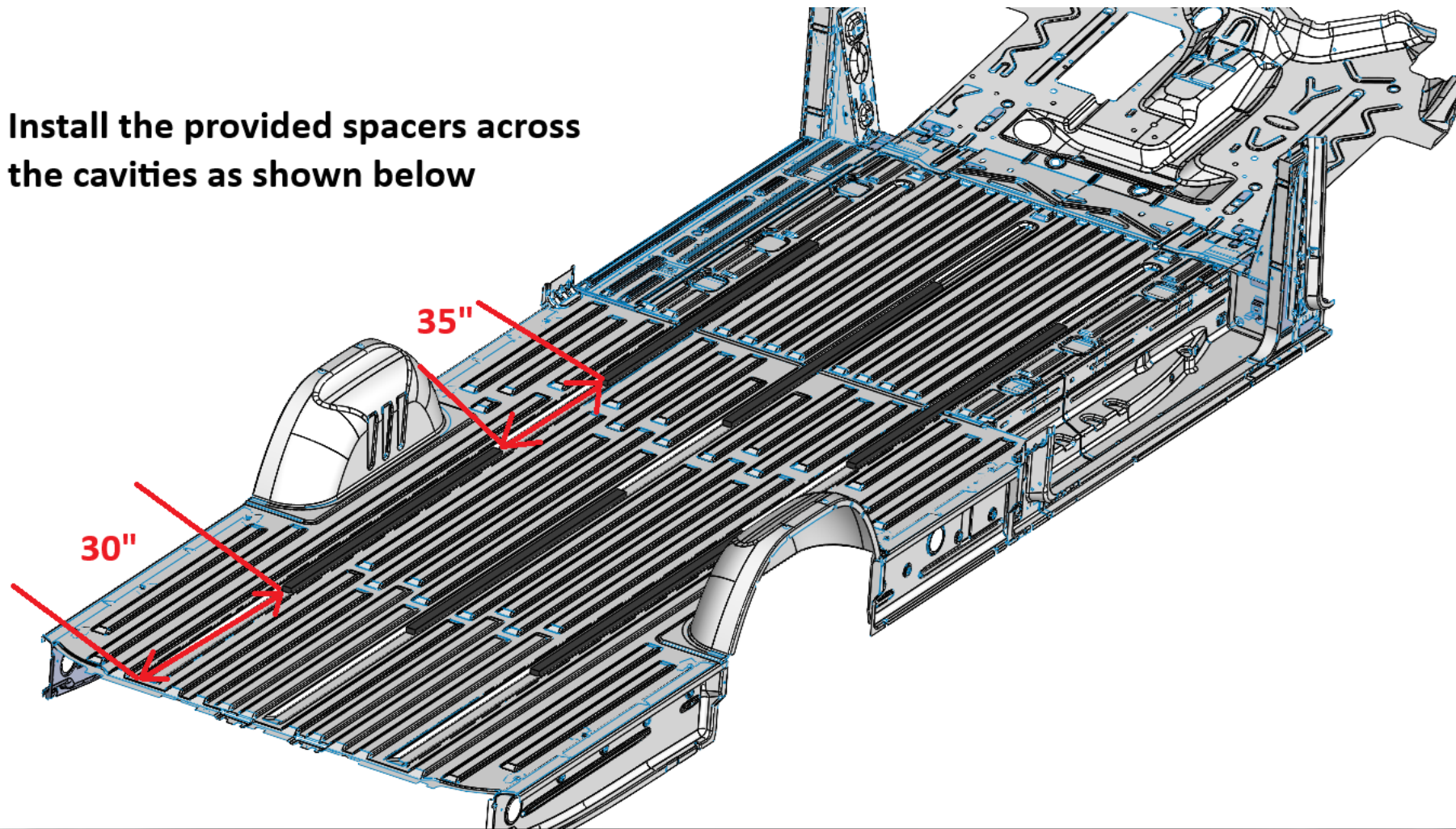


GLUE



Spacers

Install the provided spacers across the cavities as shown below



Assembly instructions

Remove the following items before floor installation:

1. OEM Plastic Trim
2. D-Rings
3. Tie-Downs
4. Other installed parts

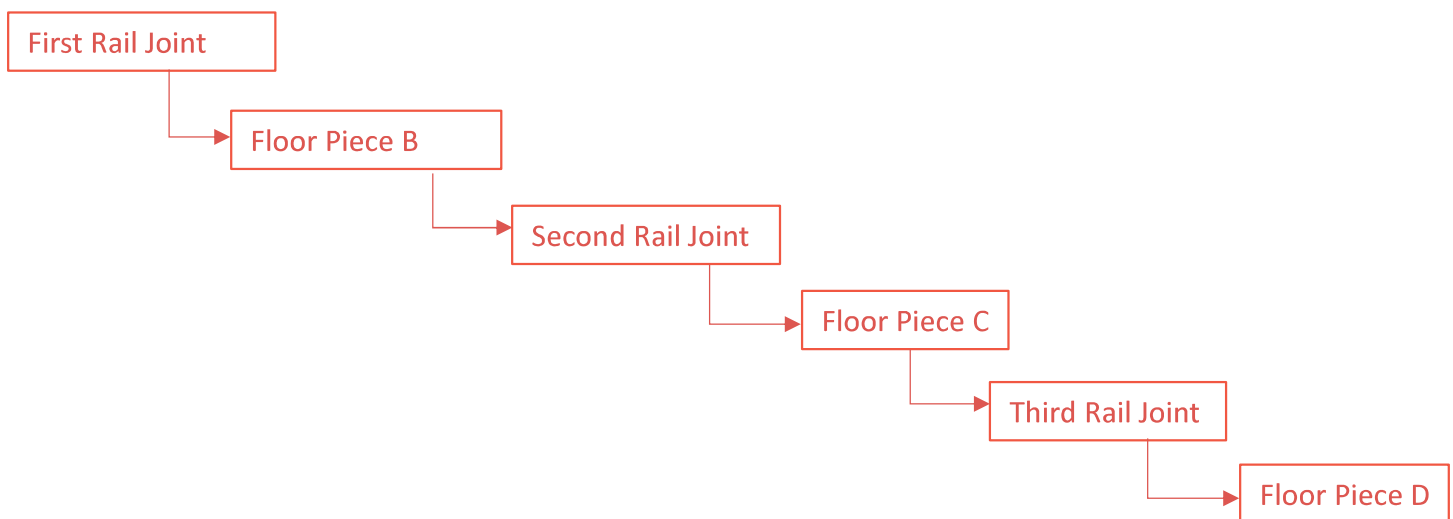
Apply a thin line of glue in both the grooves of the Rail Joints, that is supplied with Legend's floor.

Step 1: Install Floor Piece A, as shown below.



Figure 1

Step 2: Install the Parts in the following order after installing Floor Piece A. as shown below.



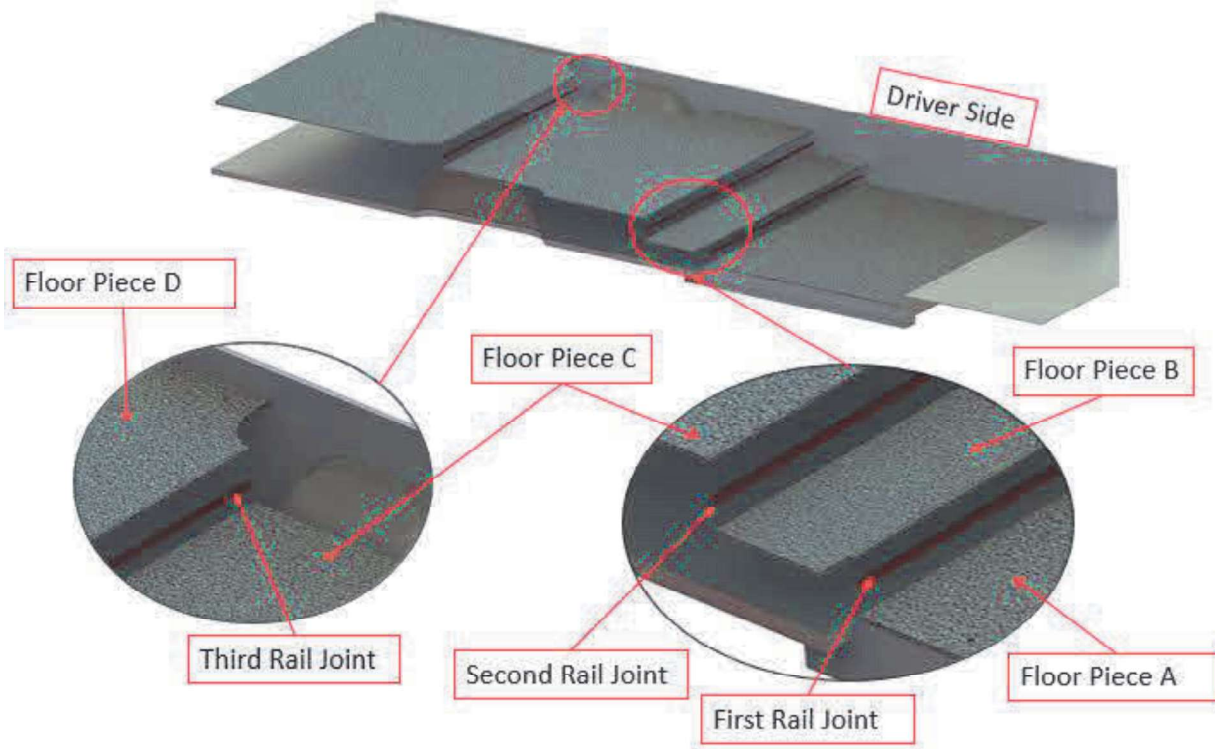


Figure 2

Step 3: Replace the OEM bolt in each D-Ring with combination of M8 Bolt and a flat washer as shown below.

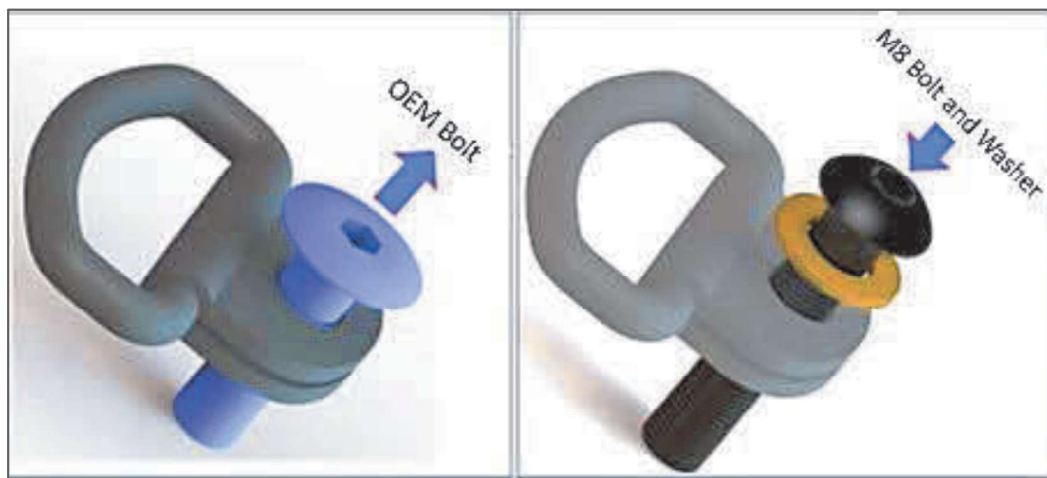


Figure 3

Step 4: Completing the installation of your Legend Floor

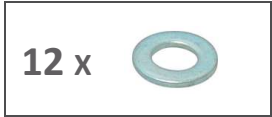
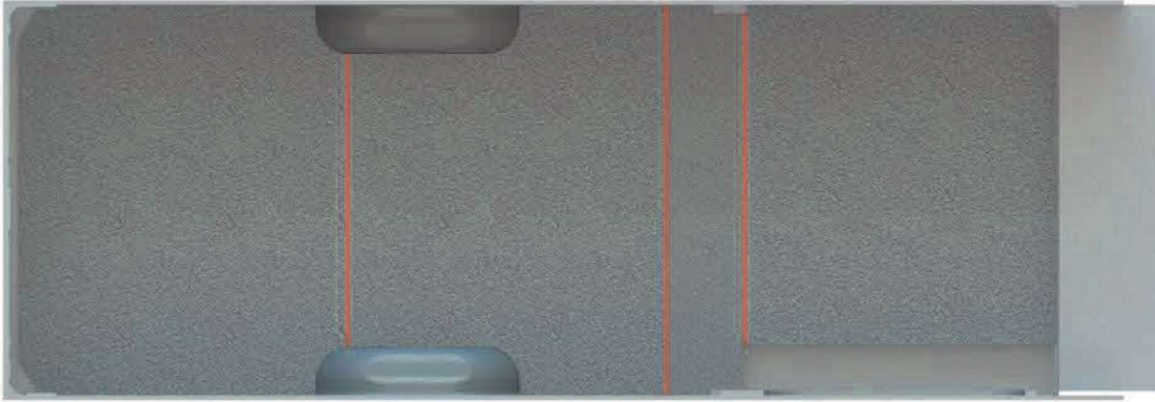


Figure 4

***"Floor Installed"** This view is from Inside of Van-Viewing from Top*

Floor Sills

Parts and Hardware



Assembly Instructions

Step 1: Position the Side Sill on Legend’s Floor. Place the Pan Head Screws (3 Nos) to the Floor as shown below

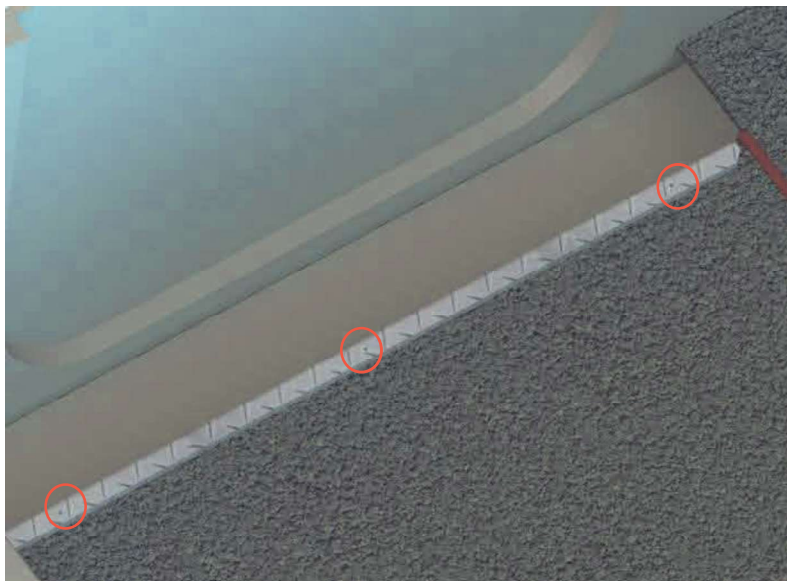
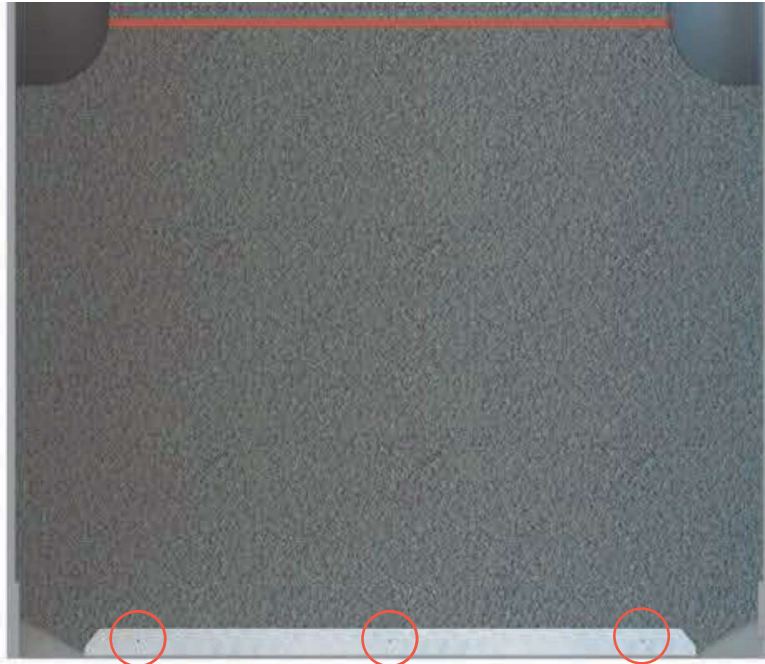


Figure 5
 “Positioning and Fixing of the Side Sill”

Step 2: Position the Rear Sill on Legend's Floor.

Driver Side



Passenger Side

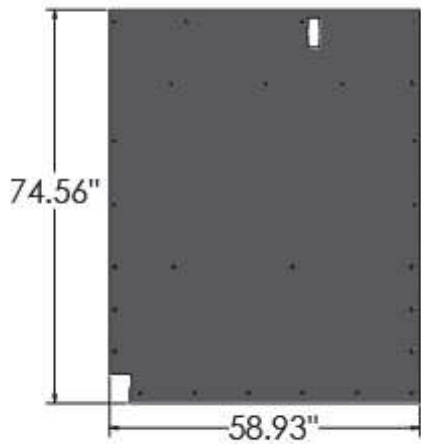


Figure 6

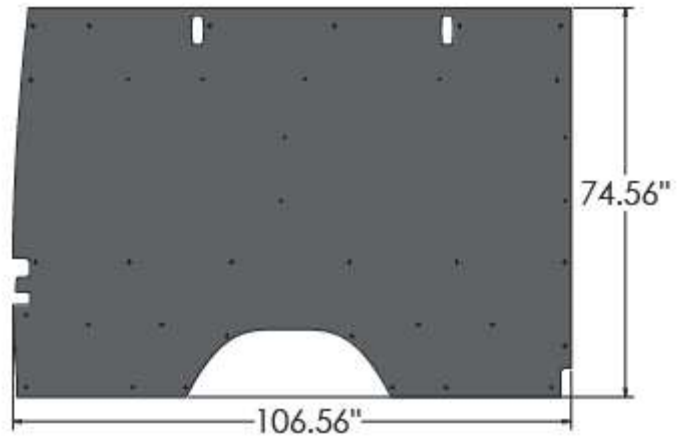
"Positioning and Fixing of the Rear Sill"

Wall Liners

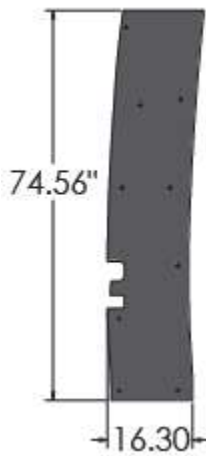
Parts and Hardware



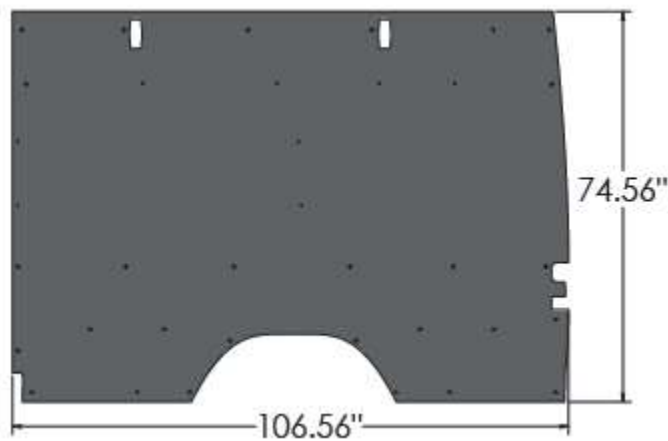
DRIVER SIDE FRONT WALL LINER (D1A)



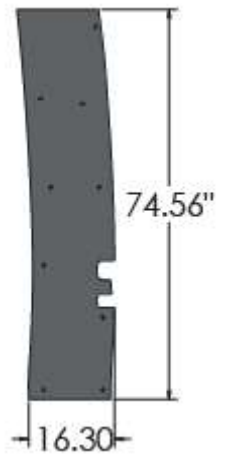
DRIVER SIDE REAR WALL LINER (D2A)



DRIVER SIDE FRONT WALL LINER (D3A)



PASSENGER SIDE FRONT WALL LINER (P1A)



PASSENGER SIDE REAR WALL LINER (P2A)

94 x



PUSH-IN RIVET

26 x



SELF-DRILLING SCREW


26 x




SCREW CAP

Assembly Instructions

If Legend's Wheel Well Covers are used, the Wall Liner will lay over the Top Flange of Wheel Well Cover.

Hole Diameter (\varnothing) = 0.40" = 

Hole Diameter (\varnothing) = 0.20" = 

Step 1: Bring the (D1A) Liner into the vehicle and align the holes on the panel with the ones present on the vehicle's body.

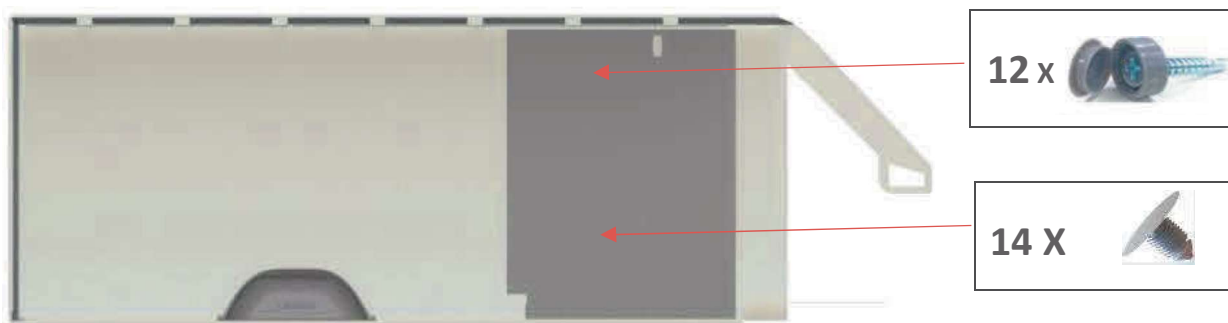


Figure 7

Step 2: Bring the (D2A) Liner into the vehicle and align the holes on the panel with the ones present on the vehicle's body.

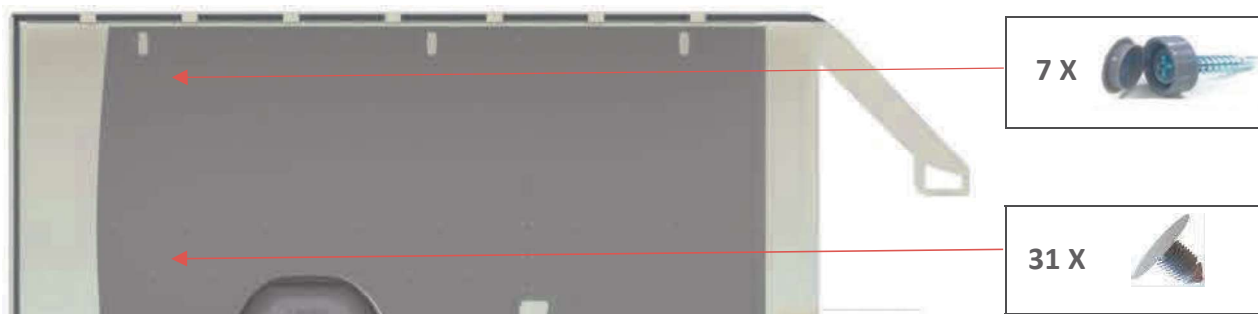


Figure 8

Step 3: Bring the (D3A) Liner into the vehicle and align the holes on the panel with the ones present on the vehicle's body.

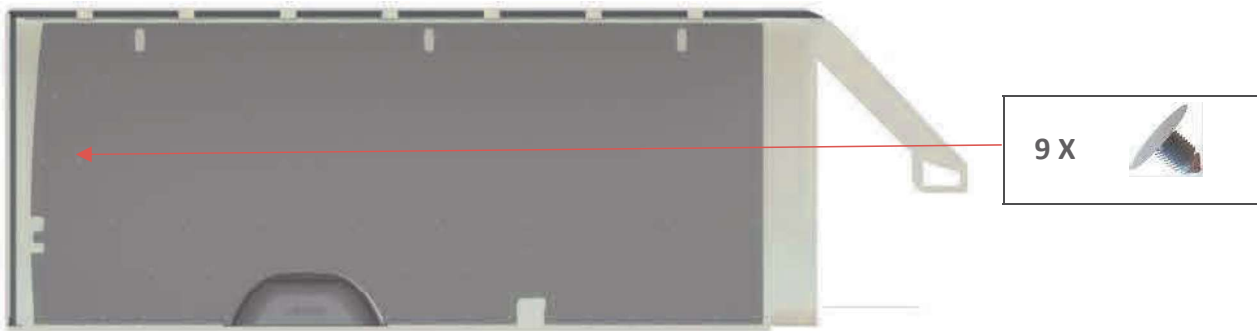


Figure 9

"Driver Side Front & Rear Wall Liner Installed" This is view from Inside of the Van- Viewing from Passenger Side

Step 4: Bring the (P1A) Liner into the vehicle and align the holes on the panel with the ones present on the vehicle's body.

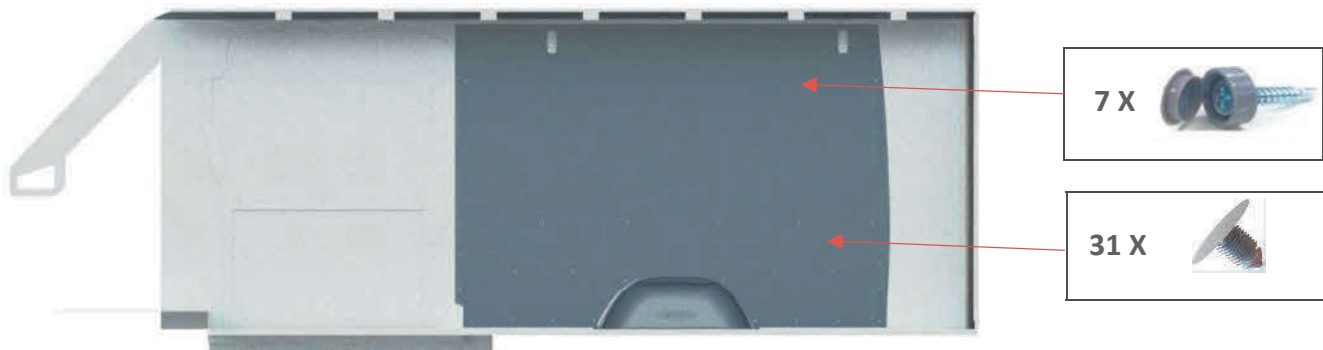


Figure 10

"Passenger Side Front Wall Liner Installed" This is view from Inside of the Van- Viewing from Driver Side

Step 5: Bring the (P2A) Liner into the vehicle and align the holes on the panel with the ones present on the vehicle's body.

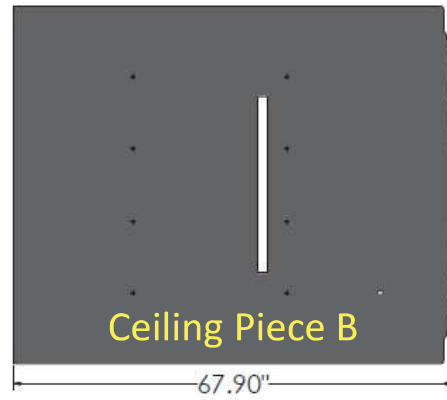
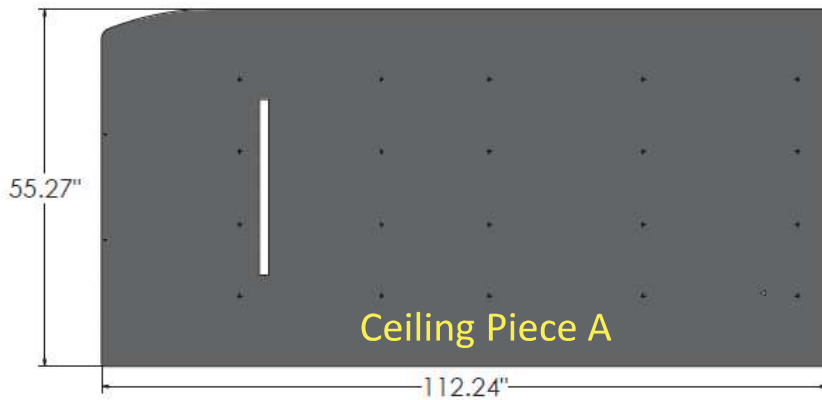


Figure 11

"Passenger Side Front & Rear Wall Liner Installed" This is view from Inside of the Van- Viewing from Driver Side

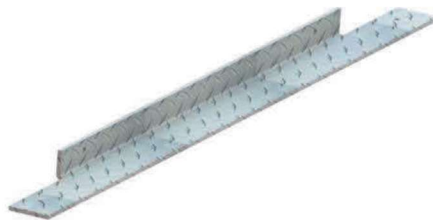
Ceiling Liners

Parts and Hardware



CEILING PIECES

1 x



CEILING BRACKET

1 x



CEILING JOINER STRIP (55.25")

2 x



SCREW CAP

2 x



SELF-DRILLING SCREW


28 x




PUSH-IN RIVET

Assembly Instructions

Follow the below instructions for score lines on Rear surface of Ceiling Panel

Hole Diameter (ϕ) = 0.40" = 

Hole Diameter (ϕ) = 0.20" = 

Cut along this score line (Shown in Green) if Foam Blocks are present behind headliner

Cut along this score line (Shown in Black) to fit around the OEM Lights

Bend the Panel along this score line (Shown in Blue) to allow the ceiling to arch along the cross beam



Step 1: Install Ceiling Bracket to the roof as shown below.

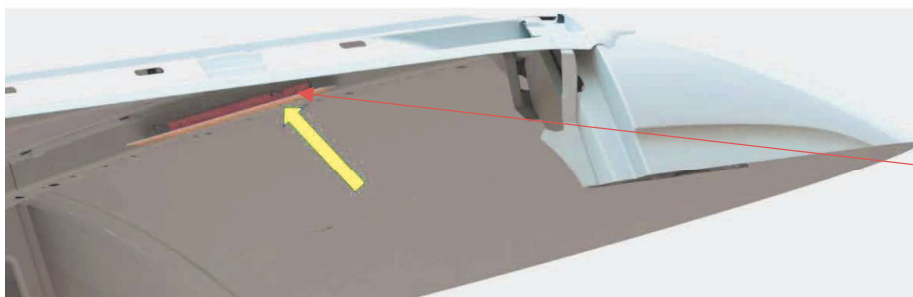
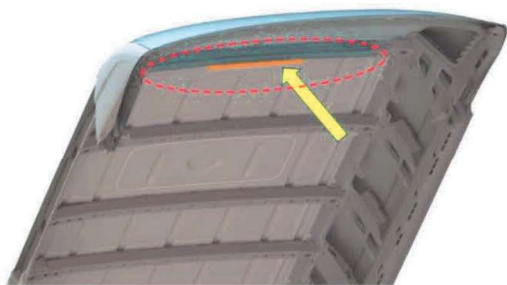


Figure 12

Step 2: Install Ceiling Piece A, as shown below.

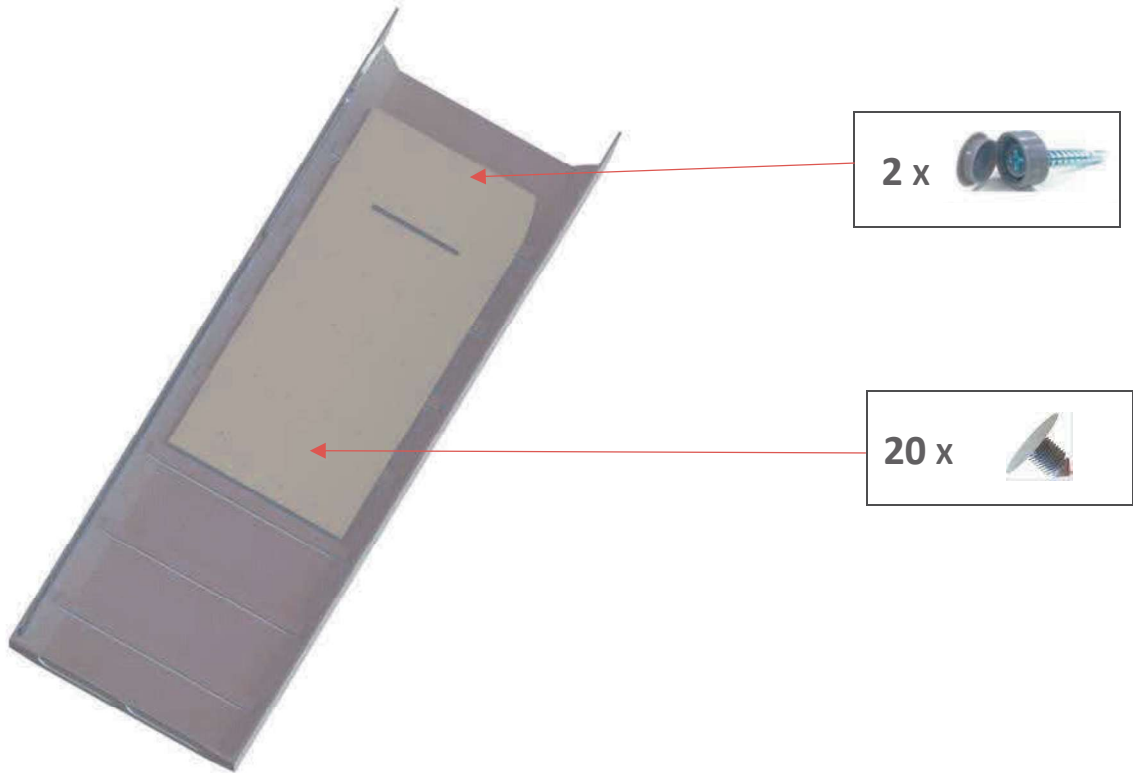


Figure 13

"Positioning and Fixing of the Ceiling Panel A" This View is from Inside of the Van

Step 3: Install the Ceiling Joiner strip at the edge of the Front Ceiling panel

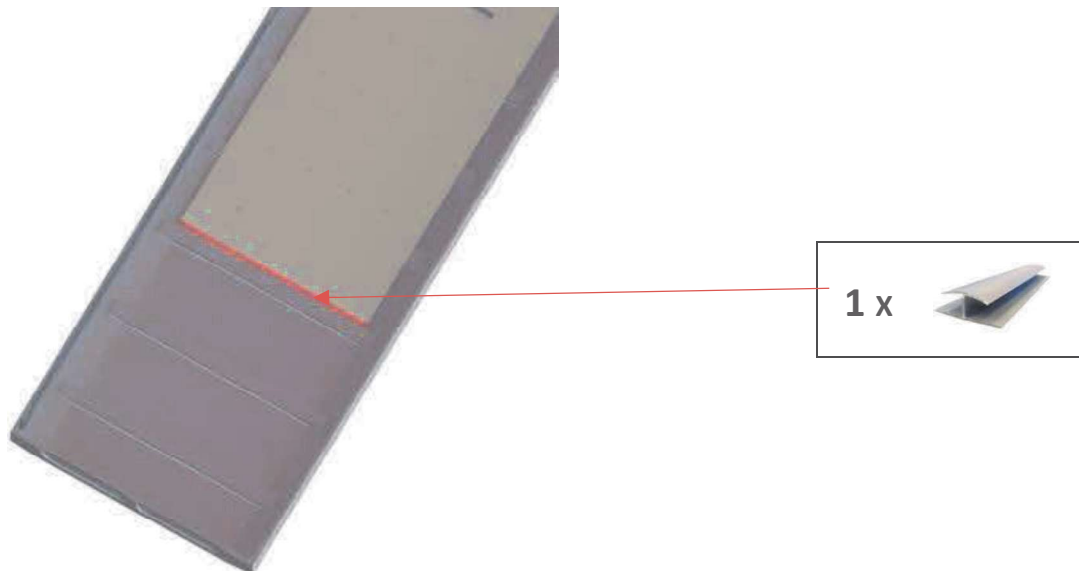


Figure 14

"Positioning and Fixing of the Ceiling Liner Strip" This View is from Inside of the Van

Step 4: Install Ceiling Piece B, as shown below. Ceiling liner.

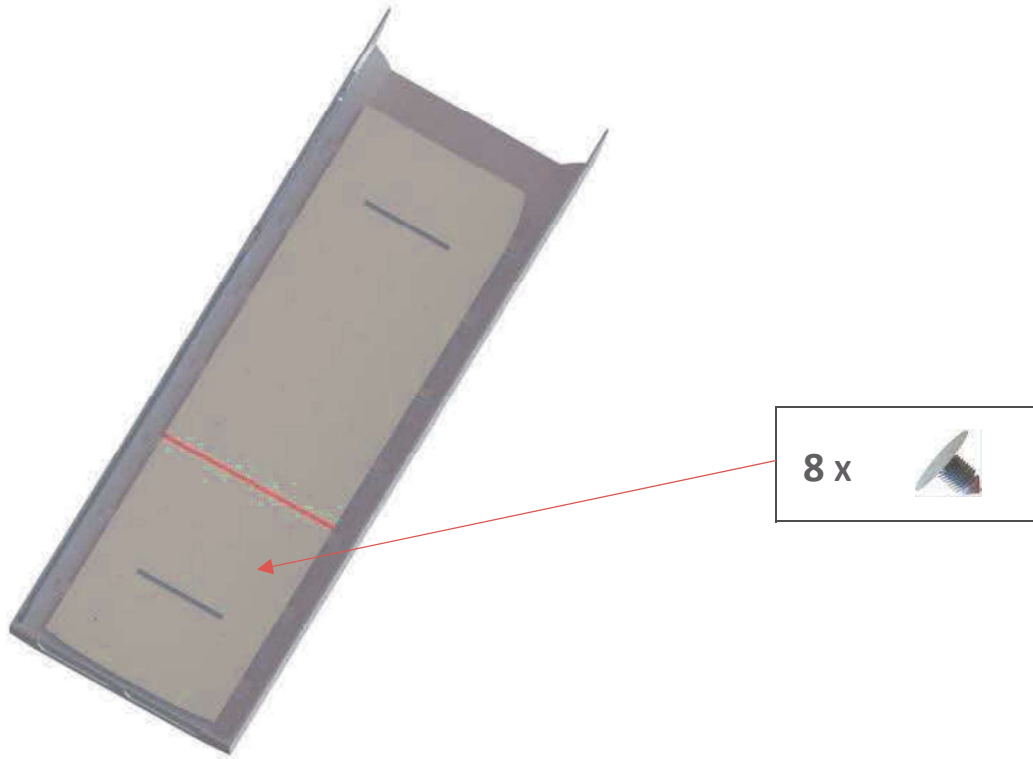


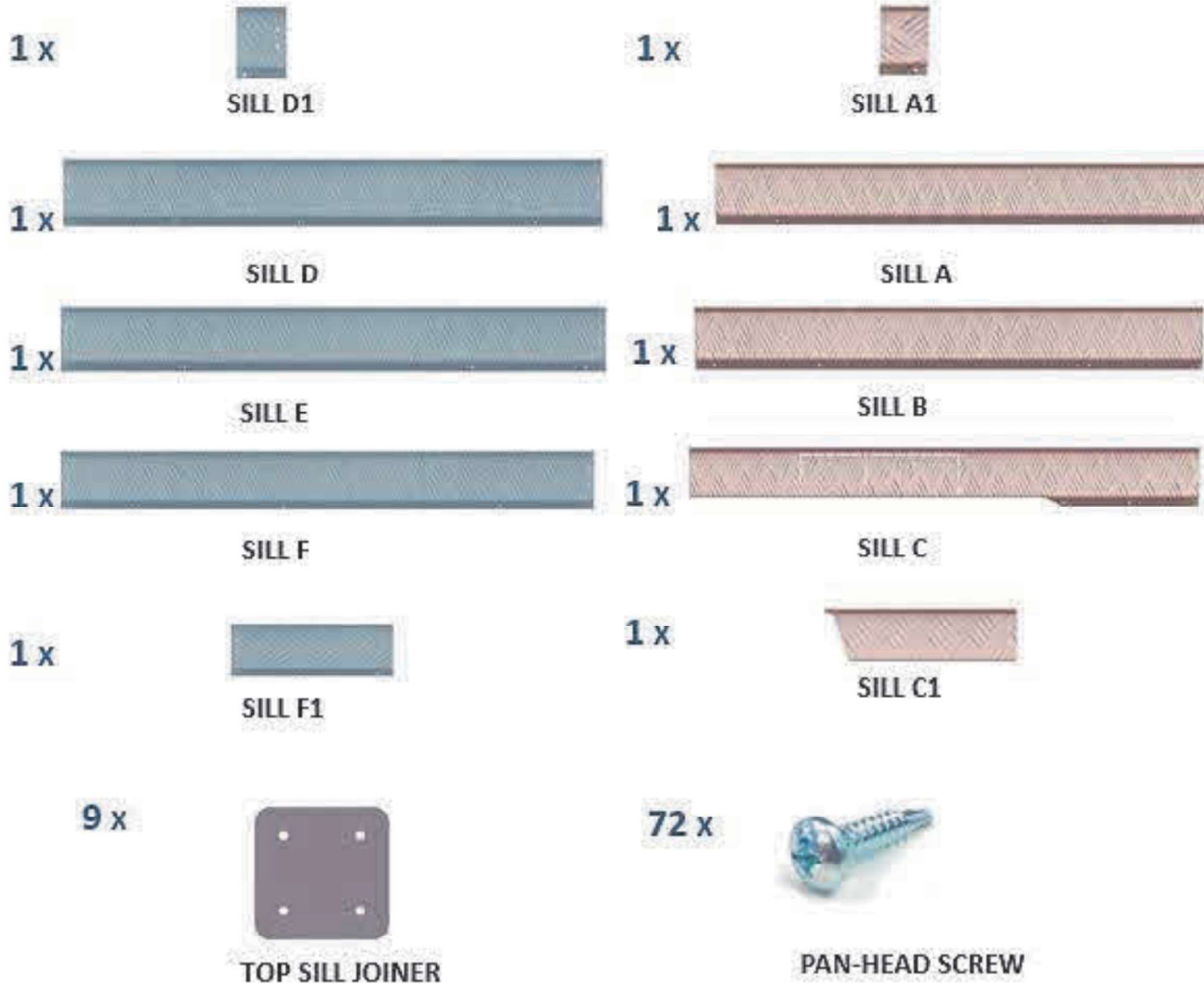
Figure 15

"Positioning and Fixing of the Ceiling Panel B" This View is from Inside of the Van

Step 5: This completes the installation of your Legend Ceiling Liner.

Top Sills

Parts and Hardware



Assembly Instructions

Assembly of the Top Sills is to be done outside of the Van before installing it in the Van.

Step 1: Assemble Driver Side sill – D1, D, E, F, F1 as shown below.

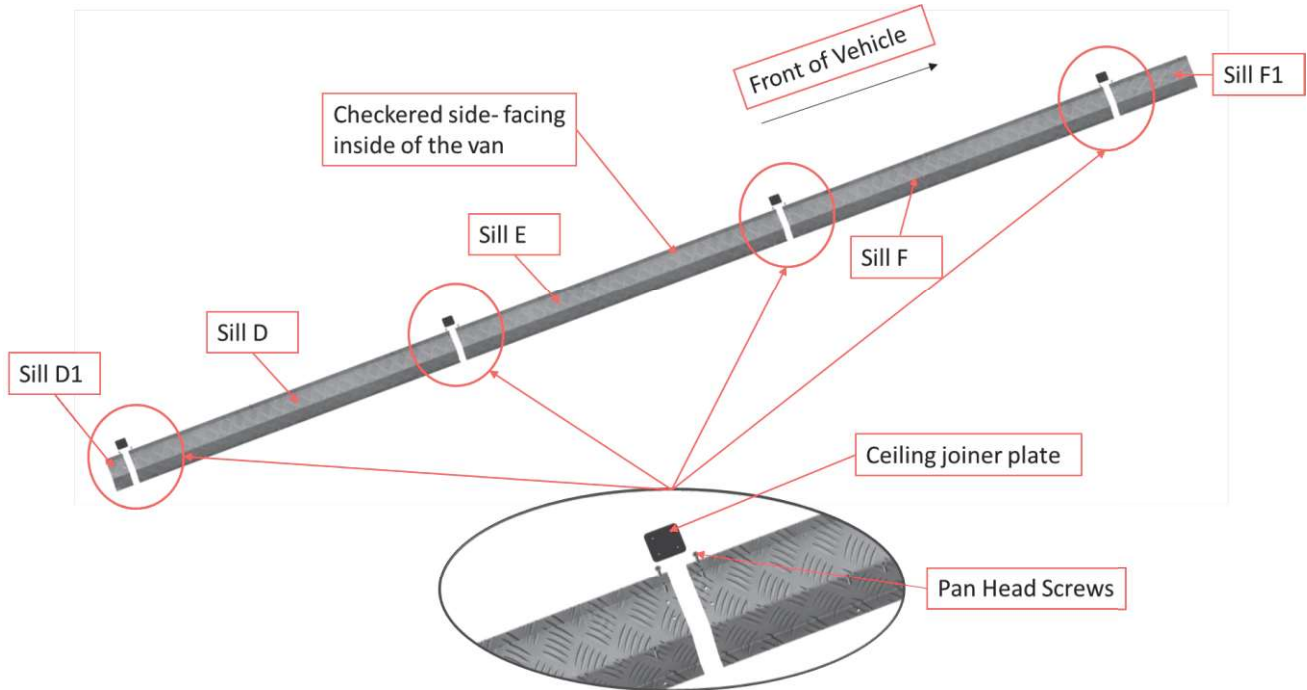


Figure 16

Note: 'Sill - F1' should not be installed when there are foam blocks by the B-Pillars (or, behind the driver and passenger seats).

Step 2: Fasten assembled sills in the Van.

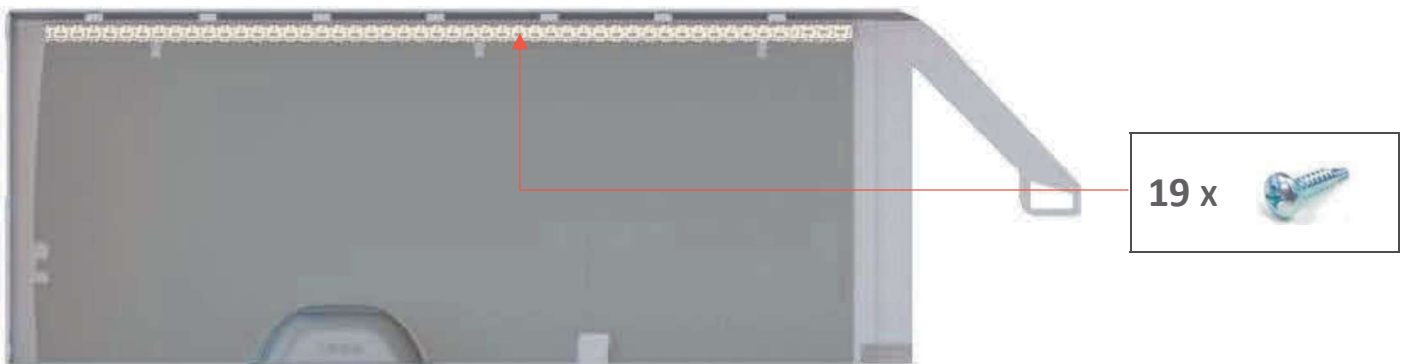


Figure 17
"Driver side Top Sills installed"

Step 3: Assemble Passenger Side Sill – A1, A, B, C, C1 as shown below.

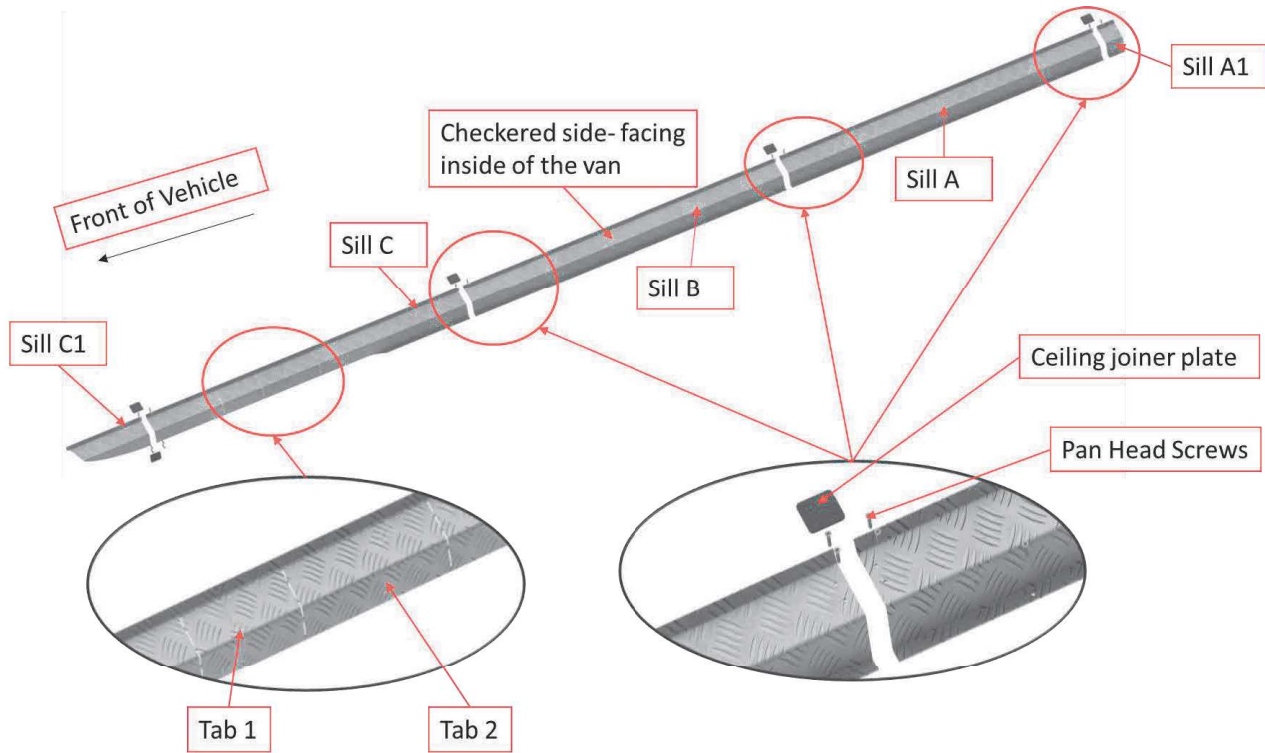


Figure 18

Note:

1. 'Sill - C1' should not be installed when there are foam blocks by the B-Pillars (or, behind the driver and passenger seats).
2. Sill C - Cut along tabs based on the presence of Rubber Block and/or Light present in the vehicle.
 Tab 1 – For Light
 Tab 2 - For Rubber Block

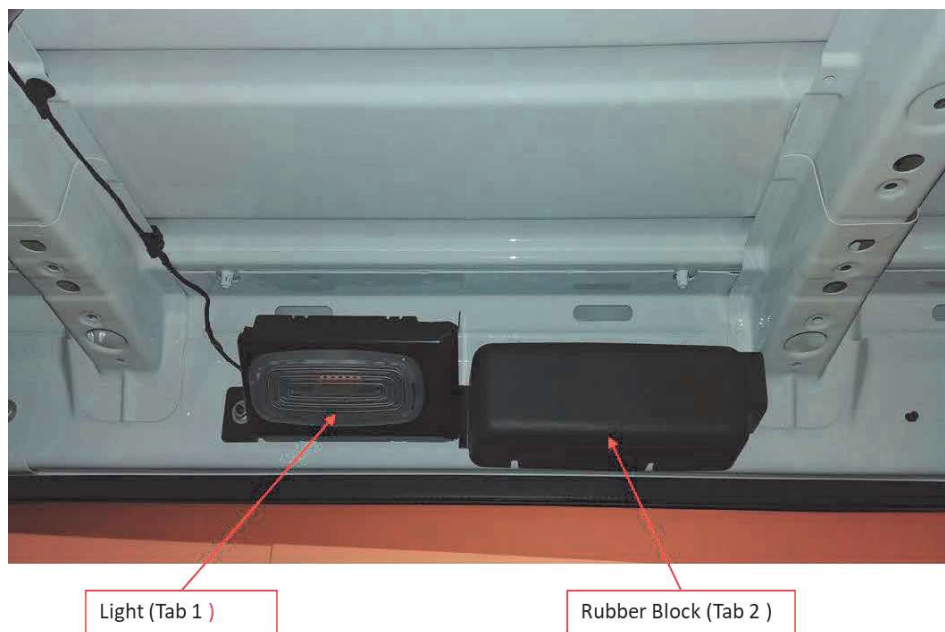


Figure 19

Step 4: Fasten assembled sills in the Van.

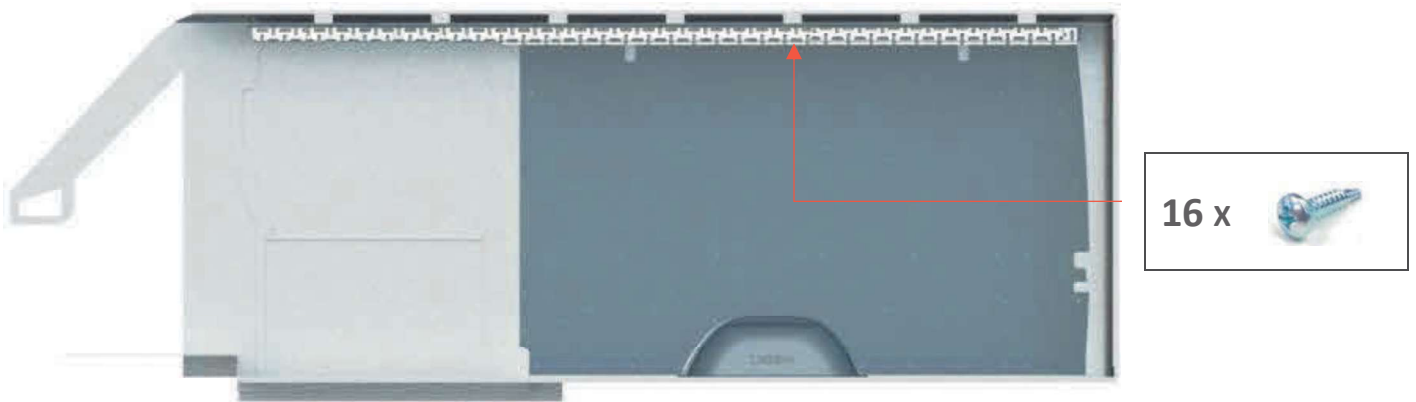


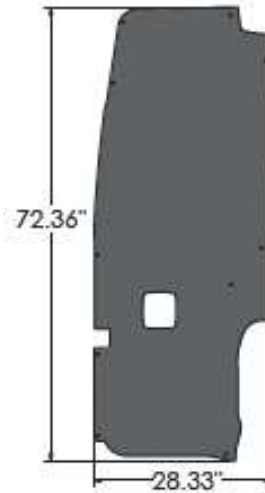
Figure 20
"Passenger side Top Sills installed"

Door Liners

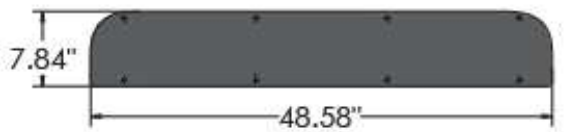
Parts and Hardware



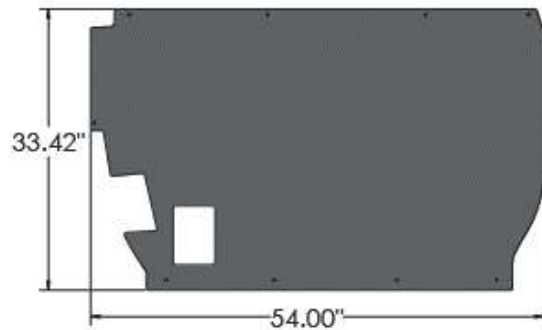
DRIVER SIDE REAR DOOR LINER(DRA)



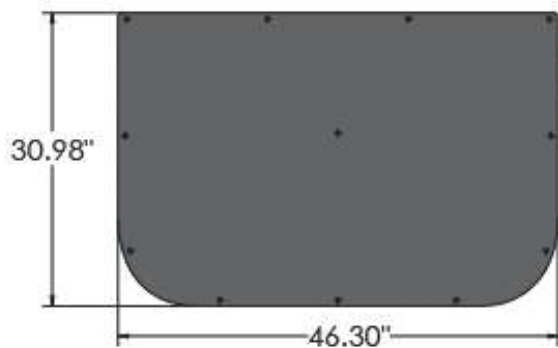
PASSENGER SIDE REAR DOOR LINER(PRA)



PASSENGER SIDE SLIDING DOOR LINER (PSC)



PASSENGER SIDE SLIDING DOOR LINER (PSB)



PASSENGER SIDE SLIDING DOOR LINER (PSA)

20 x



PUSH-IN RIVETS

33 x



SELF-DRILLING SCREW


33 x




SCREWCAP

Assembly Instructions

Van Doors MUST be in close Position When Installing Door Liners.

Hole Diameter (\varnothing) = 0.40" = 

Hole Diameter (\varnothing) = 0.20" = 

Step 1: Rear Door Assembly.

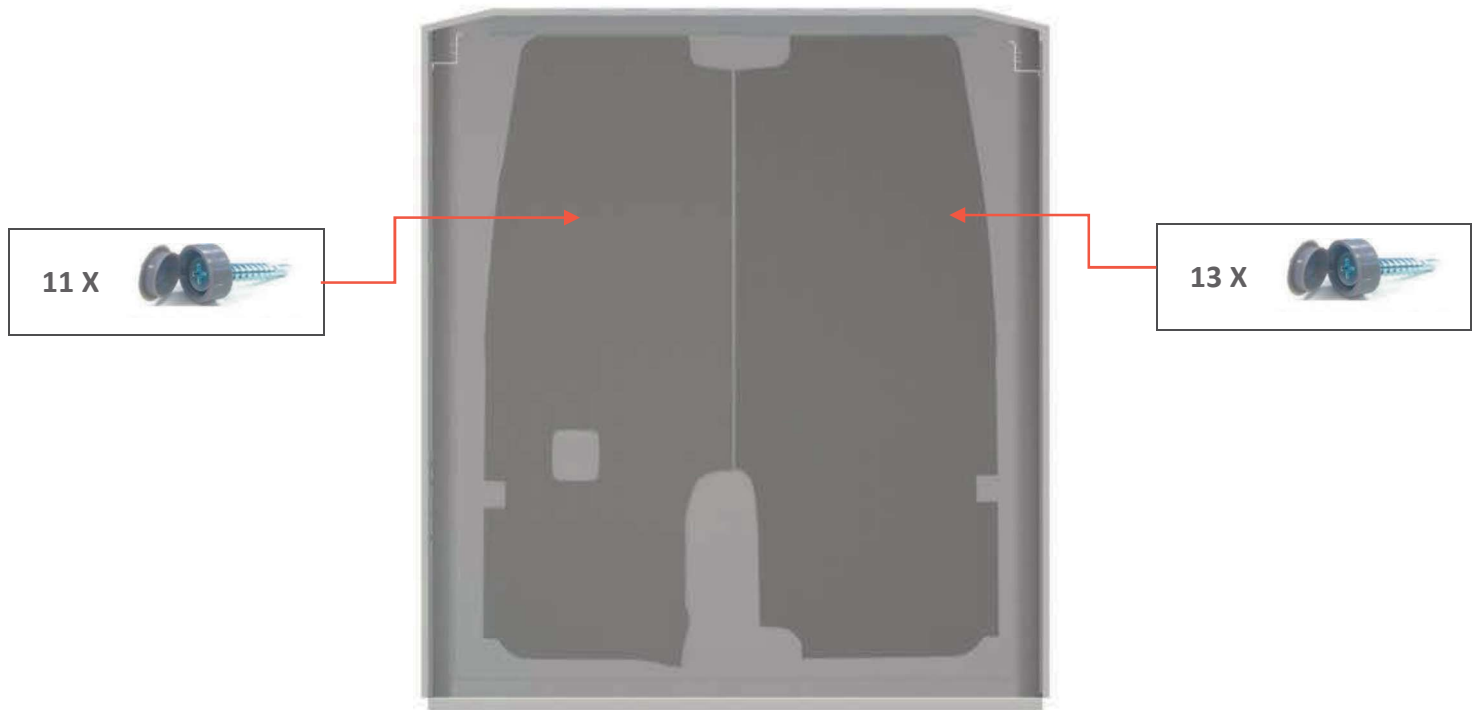


Figure 21
"Rear Door Liners Installed"

Step 2: Side Door Assembly.

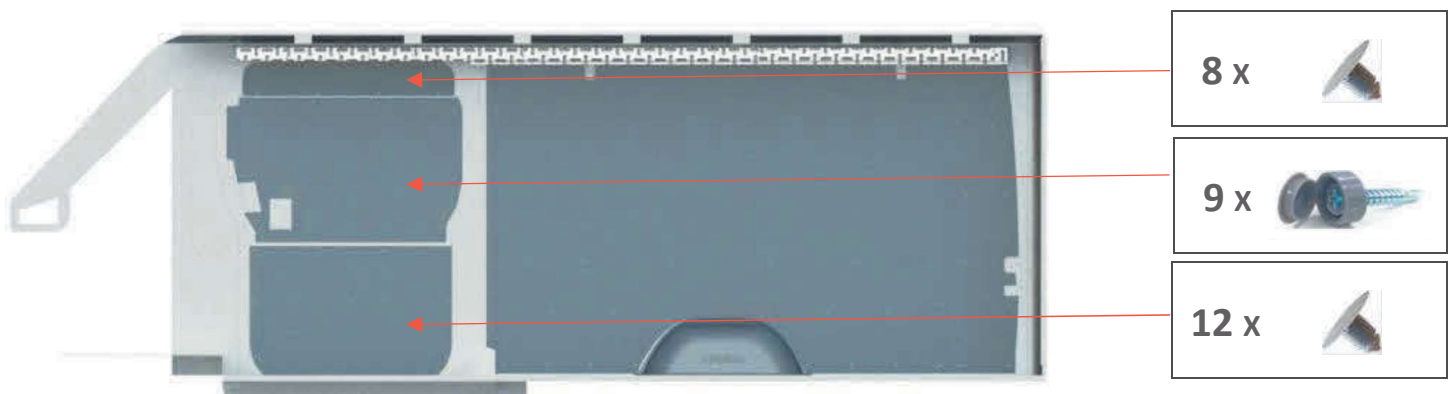


Figure 22

“Passenger Side Sliding Door Liner Installed”

Step 3: Installation of your Legend Door Liners is now complete.